



# 20 MISSION 25 ESSENTIAL:

Ensuring access to high-quality, affordable care



# WHO WE ARE

Iowa's hospitals are essential to the health and economic well-being of the state and the communities they serve.



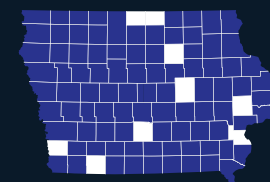
**72K**

people employed in Iowa hospitals



**\$21.3B**

contributed to Iowa's economy;  
12% of the state's gross domestic product



**123**

hospitals in 90 counties



**4th**

Ranked  
by U.S. News and World Report  
for health care affordability



**\$1.2B**

provided in annual  
community benefits



**\$5.6B**

in wages and benefits paid  
to hospital employees



**1 in 20**

nonfarm-employed Iowans  
work for hospitals



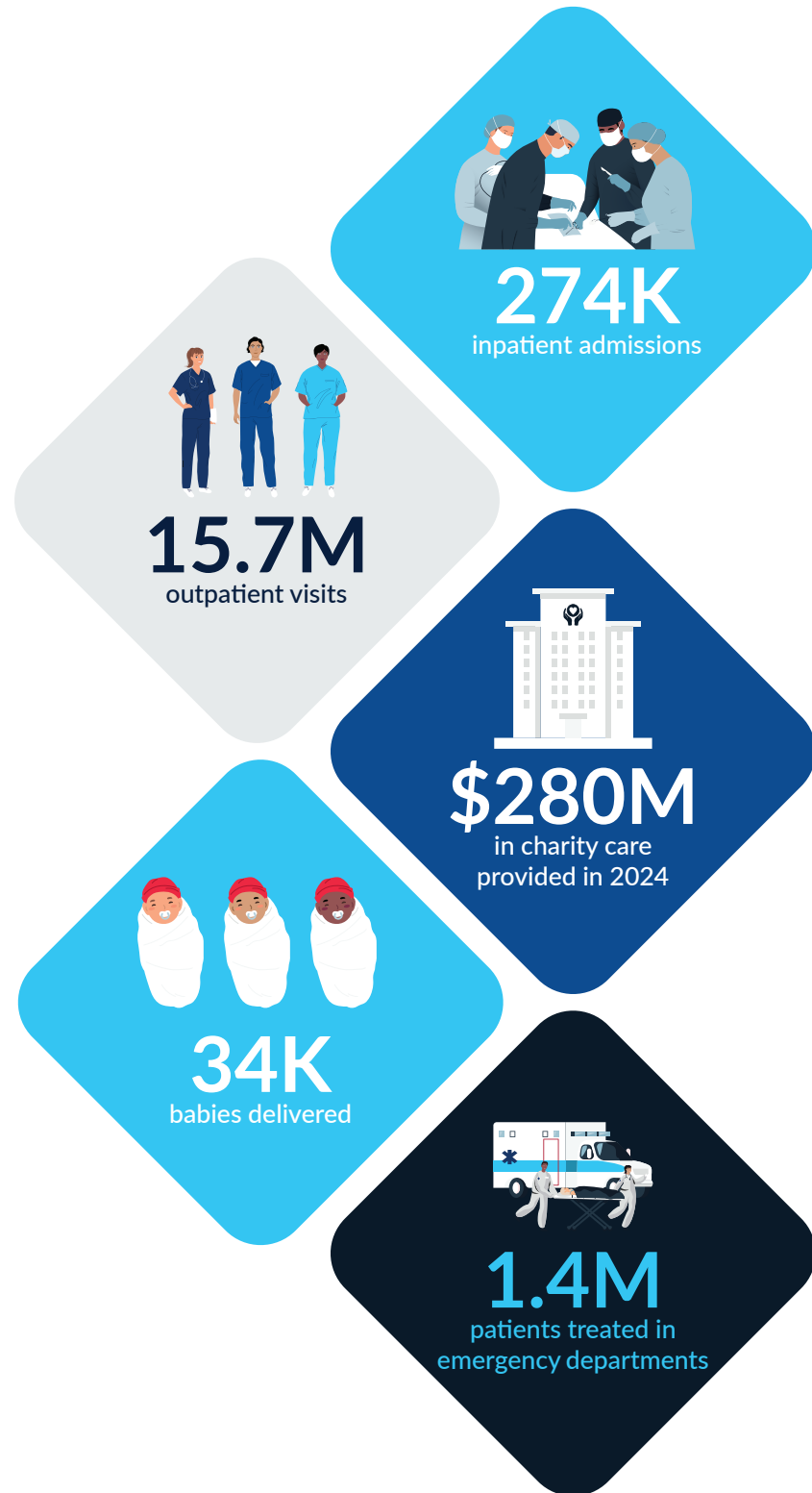
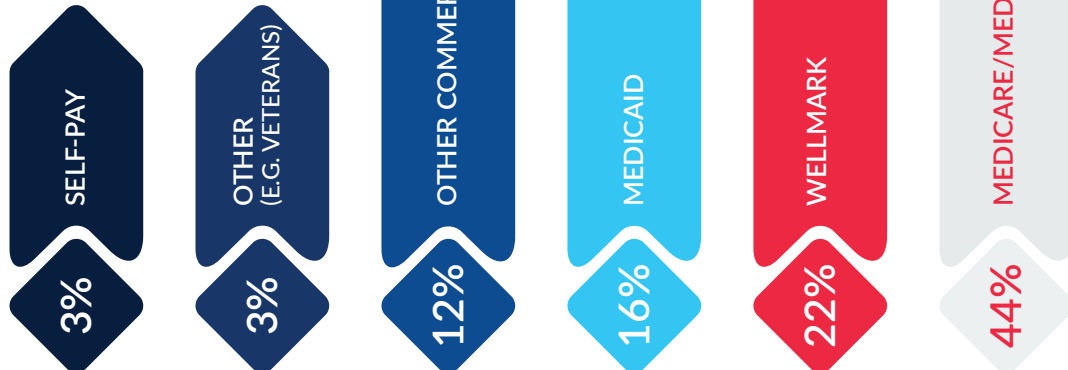
**138K**

additional jobs supported  
by Iowa hospitals

# WHO WE SERVE

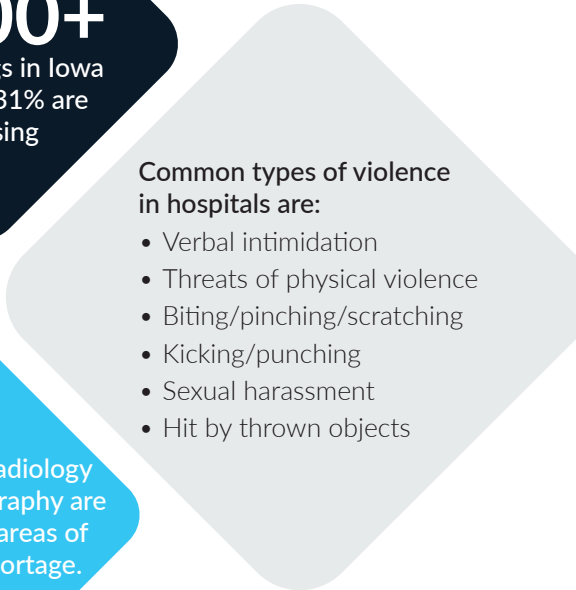
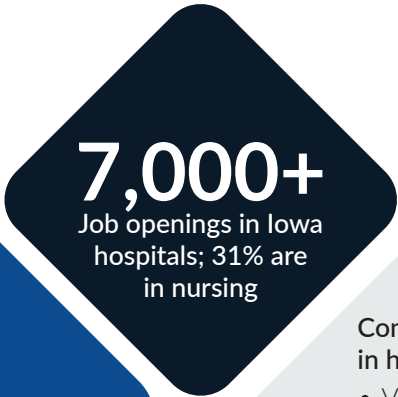
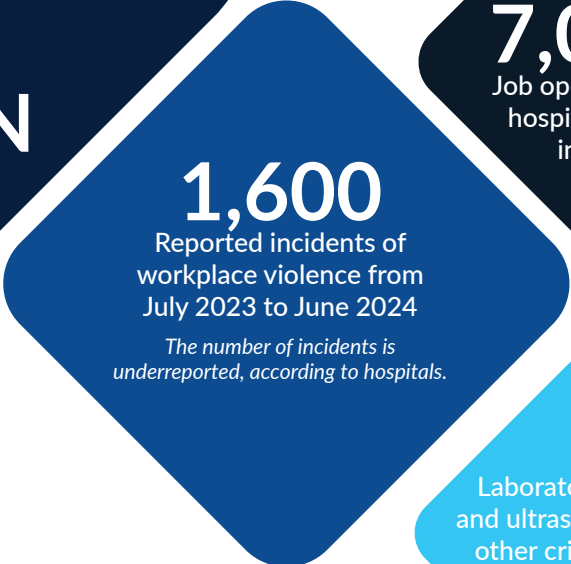
Iowa's hospitals provide Iowans with continuous, safe, high-quality care.

2024 Iowa hospital inpatient and outpatient payor mix

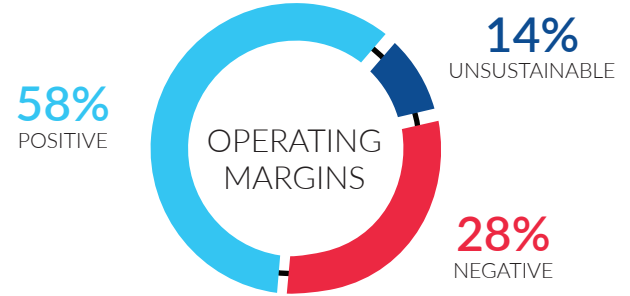


# OUR CHALLENGES: WORKFORCE, MARGINS, INFLATION

Iowa's hospitals continue to face financial and workforce challenges.



## Increased costs and inflation from 2021 to 2024:



From 2023 to 2024, Iowa hospitals' operating margins improved, partly because of the state's investment in the Medicaid managed care hospital directed payment program.