



Nebraska Medicine Lauritzen Outpatient Center

“ RDG has been really responsive to the group and have been a forward thinking, process-driven company, which is great. It’s not the building that’s going to wow people, it’s how things work within the building and they focused on that.”

*DR. JAMES CANEDY
Board of Directors, Nebraska Medicine*



The Iowa Clinic Waukee - Alice's Road



MercyOne North IA Behavioral Health



NMED Cardiac Cath Lab



NMED Lauritzen Outpatient Center

providing care for you...

Safety – beyond regulatory requirements: supporting the well-being and security of patients, medical personnel, visitors and others.

Operational Efficiency – designs that help meet your strategic, financial, operational and clinical goals.

Maximized Return – success measures that include aesthetics and program, budget adherence and how quickly the facility becomes operational.

Environmental Sustainability – design solutions that integrate cost, aesthetics and functional efficiency.

3P Process – better design with less initial capital investment and lower costs.

and care for your patients

Successful facilities encompass every facet of healing:

Welcoming the patient's support network.

Nurturing the body and spirit.

Giving staff the tools to deliver the best care.

Our healthcare team listens to you, creating solutions that enhance patient experience by considering the whole patient—beyond diagnosis.



NMED Village Pointe ASC



Lakes Regional Healthcare



Children's Hospital of Omaha ASC

architecture
landscape
artistry
engineering
planning
graphics
video
interiors
lighting
sustainability



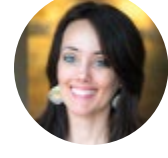
www.rdgusa.com



one distinct organization



one extraordinary group of individuals



one shared purpose: great healthcare design



DES MOINES

Phil Hodgin, AIA

515.309.3204

phodgin@rdgusa.com

OMAHA

Nate Gieselman, AIA

402.392.0133

ngieselman@rdgusa.com