

SECTION VII
POPULATION & DEMOGRAPHICS

IOWA POPULATION PROJECTIONS BY AGE: 2005 - 2025

The Iowa population was estimated at 3,002,555 in 2008. The tables present trends in Iowa's population by age group from 2008-2025.

Trends to note are a 13.3 percent projected decline in the 18-24 age group between 2008 and 2015 and a decline of 6.4 percent between 2015 and 2025. The decline in this age group is due to the migration out of younger persons from Iowa and fewer births. The aging of the baby boom generation is projected to increase the 65 and over age group population by 11.2 percent from 2008 to 2015, with an increase of 25.2 percent between 2015 and 2025.

The overall population in Iowa is projected to increase .8 percent between 2008 and 2015 and decline 1.1 percent increase from 2015 to 2025.

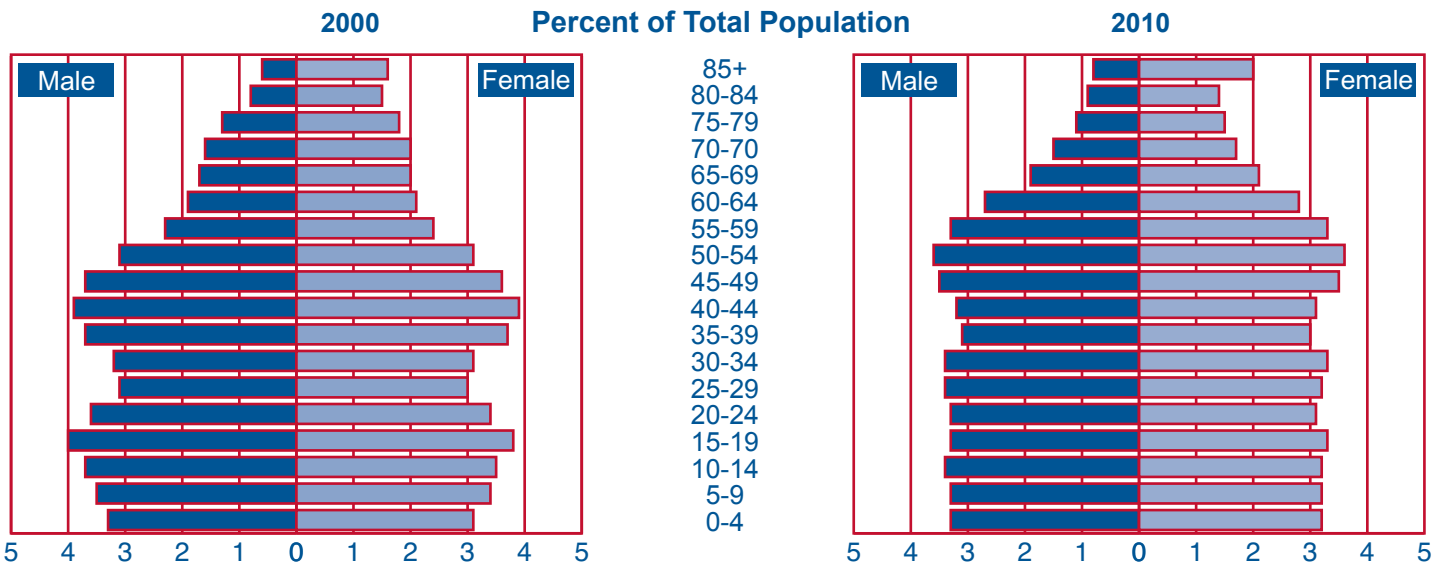
<u>Age</u>	<u>2008 Population</u>	<u>2015 Population</u>	<u>2025 Population</u>
Less than 18	712,613	707,040	681,748
18-24	306,398	265,542	249,513
25-44	750,505	765,630	714,516
45-64	788,485	793,603	728,218
65+	444,554	494,565	619,227
Total	3,002,559	3,026,380	2,993,222

Source: U.S. Census Bureau - State Population Projections

The number and proportion of older persons has grown and will continue to grow faster than the general population. The increases in the elderly population will primarily be due to the aging of "baby boomers," individuals born between 1946 and 1960, representing the largest population group in the country.

The oldest of the baby boomers turn 65 in the year 2011, at which time the United States will experience an accelerated increase in the proportion of elderly persons which will continue for several years. According to the Census Bureau, by the year 2050 as much as 25 percent of the population may be over the age 65, and one in 20 people may be 80-85 years of age, the majority of whom will be women. The growing elderly population will require expanded health care services and hospitals may be the entity most appropriate and capable of providing such services.

POPULATION PYRAMIDS OF IOWA Percent of Total Population



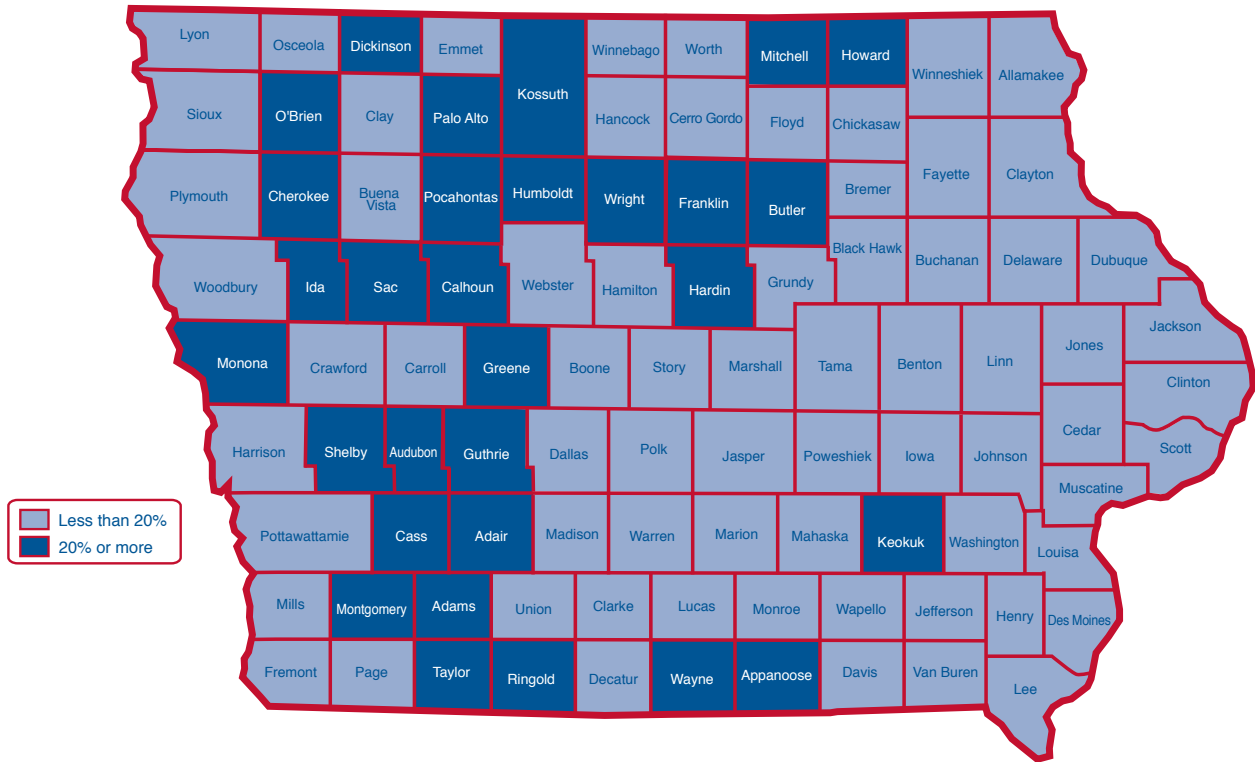
Source: U.S. Census Bureau, Population Division <http://www.iowadatacenter.org>

Iowa ranks fifth highest in the nation in the percentage of residents in the 65+ age group, exceeded only by Florida, Maine, Pennsylvania and West Virginia. Nearly 15 percent of Iowa's population was over age 65 in 2008, compared to 12.8 percent nationally. Iowa is third in the nation in the percentage 85 and older population of 2.6 percent in 2007 compared to 1.8 percent nationally.

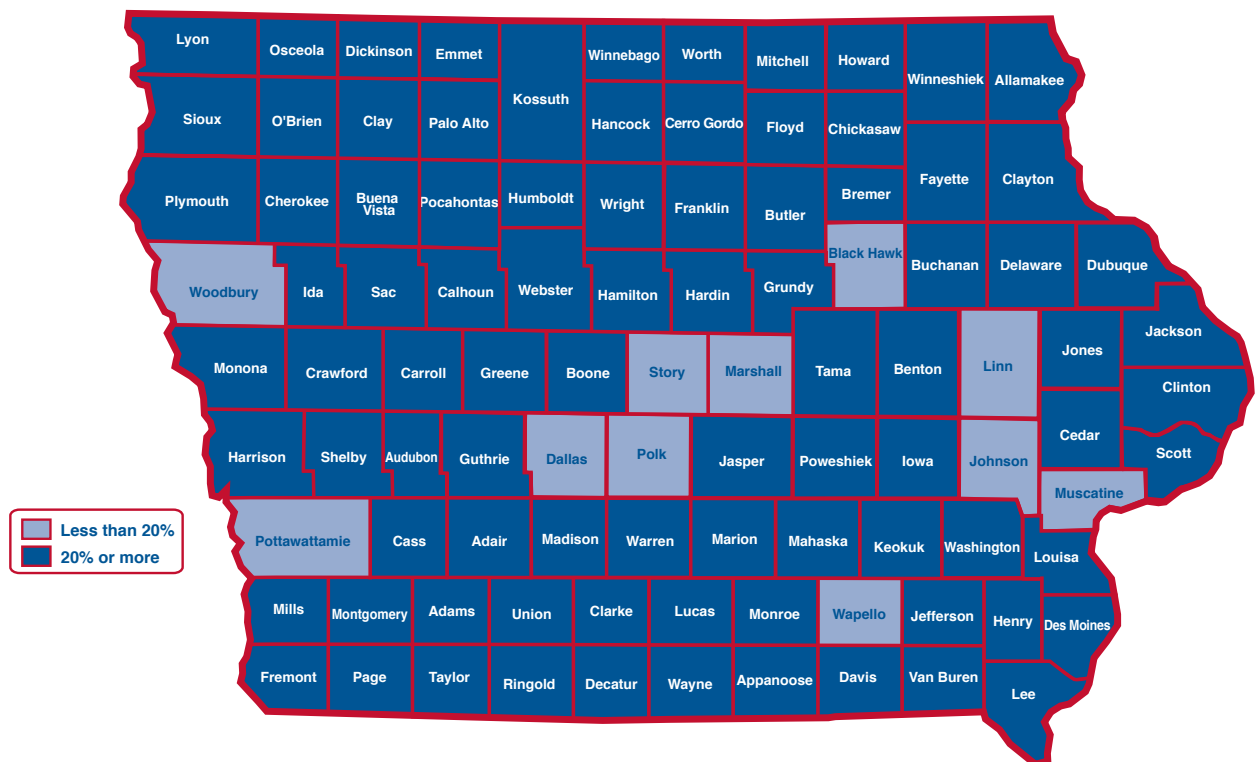
POPULATION AGE 65 AND OVER: 2000 VS. 2030

The maps below highlight residents 65 and over for 2000 compared to 2030. There will be 88 Iowa counties in 2030 in which at least 20 percent of the residents will be age 65 and over according to Woods & Pool Economics, Inc. In 2000, that number was 30 Iowa counties.

POPULATION AGE 65 AND OVER IN YEAR 2000



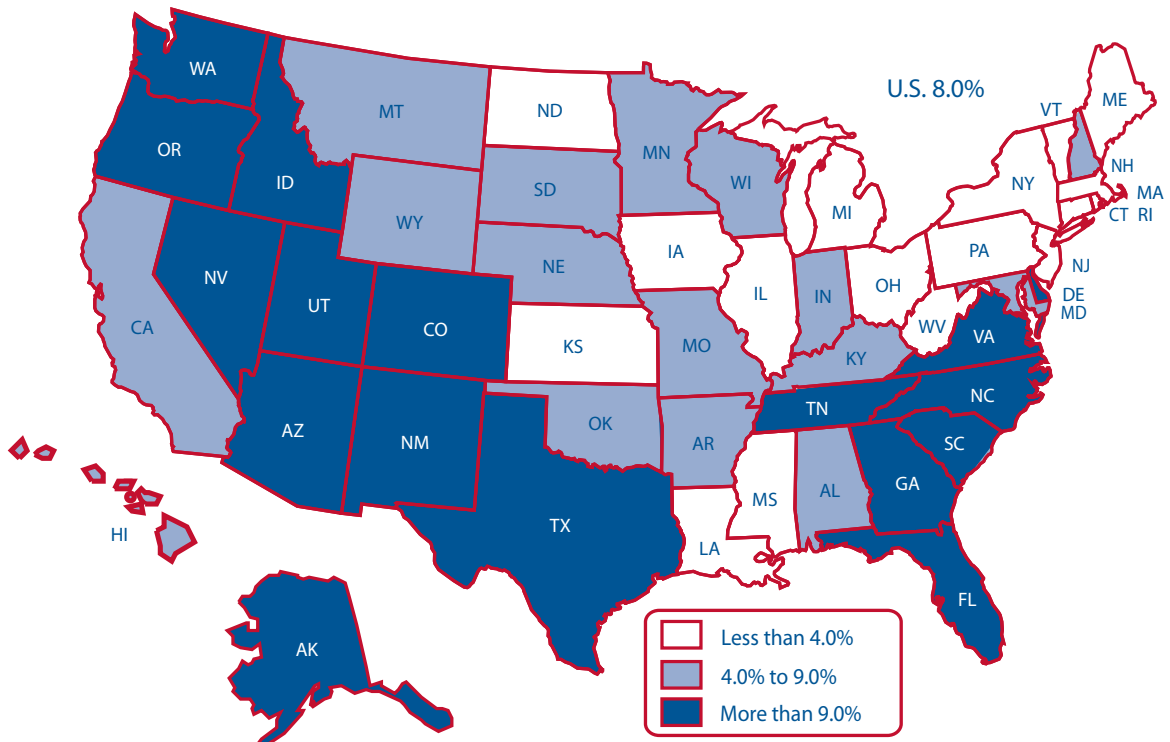
POPULATION AGE 65 AND OVER IN YEAR 2030



Source: State of Iowa, U.S. Census Bureau

POPULATION CHANGE BY STATE: 2008

The map and information below highlights the percent in population change for the U.S. and states from 2000 to 2008. Iowa's population increased 2.6 percent from 2000 to 2008, which is lower than the U.S. total change of 8.0 percent. Iowa ranked 10th lowest nationally.



Source: U.S. Census Bureau, Population Division

Rank	State	Population Change	Rank	State	Population Change
	United States	8.0%	26	Minnesota	6.1%
1	Nevada	30.1%	27	Missouri	5.6%
2	Arizona	26.7%	27	Kentucky	5.6%
3	Utah	22.5%	27	Oklahoma	5.6%
4	Georgia	18.3%	30	Wisconsin	4.9%
5	Idaho	17.8%	30	Indiana	4.9%
6	Texas	16.7%	32	Alabama	4.8%
7	Colorado	14.8%	33	Nebraska	4.2%
8	Florida	14.7%	33	Kansas	4.2%
9	North Carolina	14.6%	35	Illinois	3.9%
10	South Carolina	11.7%	36	District of Columbia	3.5%
11	Delaware	11.4%	37	Mississippi	3.3%
12	Washington	11.1%	37	Maine	3.3%
13	Oregon	10.8%	39	New Jersey	3.2%
14	Virginia	9.7%	40	Connecticut	2.8%
15	Alaska	9.5%	41	New York	2.7%
16	Tennessee	9.2%	42	Iowa	2.6%
17	New Mexico	9.1%	43	Massachusetts	2.3%
18	California	8.5%	44	Vermont	2.0%
19	Wyoming	7.9%	45	Pennsylvania	1.4%
20	Montana	7.2%	46	Ohio	1.2%
21	Arkansas	6.8%	47	Michigan	0.7%
22	South Dakota	6.5%	48	West Virginia	0.3%
22	New Hampshire	6.5%	49	Rhode Island	0.2%
24	Maryland	6.4%	50	North Dakota	-0.1%
25	Hawaii	6.3%	51	Louisiana	-1.3%